



Express coupling( NF E 29573) is a kind of symmetrical half coupling for water and comprised air use. Operation of this kind of coupling is pushing two couplings and rotating close into a seal form. It is popular in France area and European market with brass and stainless steel. The claw lug distance is 41mm for all sizes.

### Application

Luxe's Express couplings are widely used in the transferring of water and compress air .

### Material

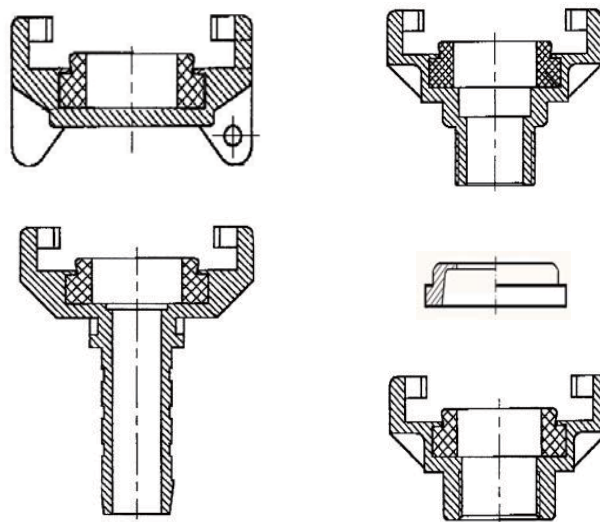
- 1.Stainless steel
- 2.Brass
- 3.Carbon steel and zinc alloy on customer's demand



### Seal





- 1.As standard the coupling in SS have a black Viton sealing ring
- 2.The brass coupling with a black NBR sealing ring.

### Thread

- 1.Female thread BSP EN ISO 228-1
- 2.Male thread BSP EN ISO 228-1



<b>Luxecasting 2014</b>	<b>Name</b>	<b>Size</b>	<b>Code</b>	<b>D mm</b>	<b>Price USD</b>
	EXH10BR	3/8"	L0702043	10	
	EXH13BR	1/2"	L0702044	13	
	EXH16BR	5/8"	L0702045	16	
	EXH19BR	3/4"	L0702050	19	
	EXH25BR	1"	L0702032	25	
	EXH32BR	1 1/4"	L0702046	32	
	EXH38BR	1 1/2"	L0702047	38	
	EXH10SS	3/8"	L0702015	10	
	EXH13SS	1/2"	L0702011	13	
	EXH16SS	5/8"	L0702069	16	
	EXH19SS	3/4"	L0702012	19	
	EXH25SS	1"	L0702013	25	
	EXH32SS	1 1/4"	L0702070	32	
	EXH38SS	1 1/2"	L0702071	38	
	<b>Name</b>	<b>Size</b>	<b>Code</b>	<b>Thread</b>	<b>Price USD</b>
	EXF7BR	1/4"	L0702048	G1/4"	
	EXF10BR	3/8"	L0702049	G3/8"	
	EXF13BR	1/2"	L0702051	G1/2"	
	EXF16BR	5/8"	L0702052	G5/8"	
	EXF19BR	3/4"	L0702037	G3/4"	
	EXF25BR	1"	L0702029	G1"	
	EXF32BR	1 1/4"	L0702053	G1 1/4"	
	EXF38BR	1 1/2"	L0702054	G1 1/2"	
	EXF7SS	1/4"	L0702055	G1/4"	
	EXF10SS	3/8"	L0702001	G3/8"	
	EXF13SS	1/2"	L0702009	G1/2"	
	EXF16SS	5/8"	L0702056	G5/8"	
	EXF19SS	3/4"	L0702007	G3/4"	
EXF25SS	1"	L0702004	G1"		
EXF32SS	1 1/4"	L0702057	G1 1/4"		
EXF38SS	1 1/2"	L0702058	G1 1/2"		

<b>Luxecasting 2014</b>	<b>Name</b>	<b>Size</b>	<b>Code</b>	<b>Thread</b>	<b>Price USD</b>	
<b>Male thread</b> 	EXM7BR	1/4"	L0702059	G1/4"		
	EXM10BR	3/8"	L0702060	G3/8"		
	EXM13BR	1/2"	L0702031	G1/2"		
	EXM16BR	5/8"	L0702061	G5/8"		
	EXM19BR	3/4"	L0702041	G3/4"		
	EXM25BR	1"	L0702062	G1"		
	EXM32BR	1 1/4"	L0702063	G1 1/4"		
	EXM38BR	1 1/2"	L0702064	G1 1/2"		
	EXM7SS	1/4"	L0702065	G1/4"		
	EXM10SS	3/8"	L0702042	G3/8"		
	EXM13SS	1/2"	L0702010	G1/2"		
	EXM16SS	5/8"	L0702066	G5/8"		
	EXM19SS	3/4"	L0702008	G3/4"		
	EXM25SS	1"	L0702005	G1"		
	EXM32SS	1 1/4"	L0702002	G1 1/4"		
	EXM38SS	1 1/2"	L0702067	G1 1/2"		
	EXC-BR		L0702068			
	EXC-SS		L0702003			
	<b>Blank cap</b> 					
<b>Express clamp</b> 	<b>Name</b>		<b>Code</b>	<b>HoseOD min-max/mm</b>	<b>Price USD</b>	
	EXA17SS		L0702072	16-18		
	EXA20SS		L0702073	19-21		
	EXA23SS		L0702074	22-24		
	EXA26SS		L0702075	25-27		
	EXA29SS		L0702076	28-30		
	EXA32SS		L0702077	31-33		
	EXA36SS		L0702078	34-36		
	EXA38SS		L0702079	37-39		
	<b>Express seal</b> 	EXNBR		L0705001		
EXViton			L0705008			